



IChemE Water Special Interest Group

Provides a forum for the exchange of ideas and the sharing of experiences in the engineering aspects of water and wastewater treatment

- *with an emphasis on informality and low cost*
- *membership open to all members of IChemE*



IChemE Water SIG activities-

Meetings

Site visits

Webinars

Newsletter WET News

Student bursaries and awards

Water boxes for primary schools

Articles and briefing notes

LinkedIn site for discussions



Benefits of membership include:

Preferential rates for visits and meetings

Newsletter WET News

Eligibility for presentation of water boxes

Access to webinar and WET News archive



Support for students by bursaries, awards and sponsorship
since 1990 – averaging 3 a year



Shanghai China, 2014



Aceh Indonesia, 2005



Water boxes for primary schools since 1994 – averaging 3 a year



Victoria School Leeds 1994

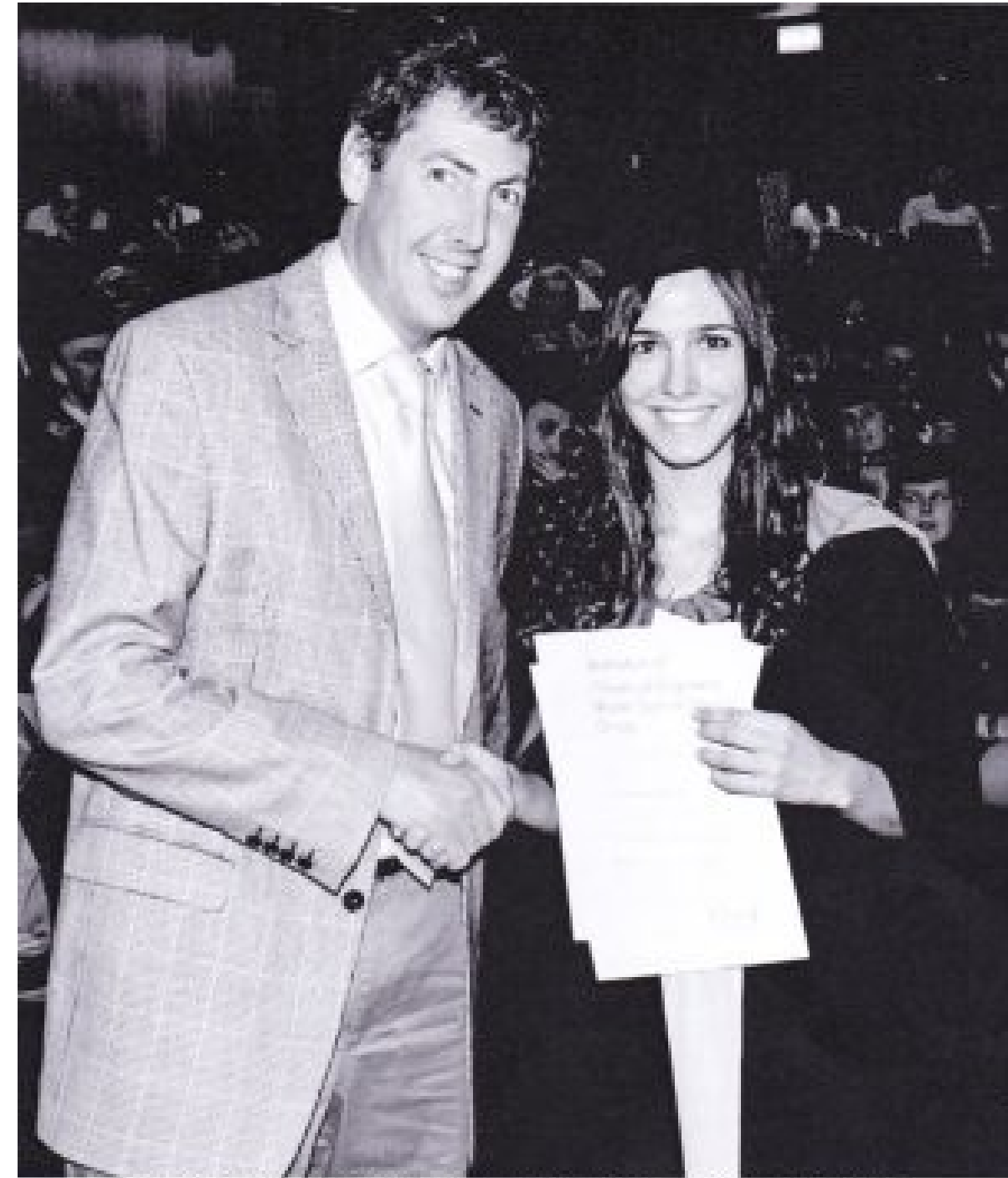


IChemE Water Award sponsorship 1993-2009, 2013, judging to date





Cranfield University MSc Thesis Prize annually since 1993
(re-named George Solt Prize since 2007)



The George Solt prize is awarded to Sara Martinez Delgado
by Water SIG secretary, Paul Curtis



WET News 1990 to date

3 copies a year



Wet News

Water Special Interest Group Newsletter

Issue 69, August 2015

IChemE
Water Special Interest Group



Jon Brooking,
Richard Hill,
Tom Stephenson
Debden WTW 2003



Events:

Visits averaging over 1 a year

Meetings averaging nearly 3 a year (half were joint meetings)

Webinars (since 2012) averaging 5 a year

Dinners since 1992 1 a year - up to 2012

Liverpool WWTW 2013





Water management at food and drink sites:

Bass Brewery Runcorn

Mortlake Brewery

Coca Cola Wakefield

Birds Eye Walls Gloucester

JDE coffee factory Banbury



Coca Cola, Wakefield 2002



Walls, Gloucester UK 2004

30 Water Special Interest Group



Other sites visited:

Blue Planet Aquarium Cheshire

Three Valleys Environmental Centre

Fiddlers Ferry power station

Didcot power station

Kappa paper mill Birmingham

Guardian Glass, Goole

Queen Elizabeth Olympic Park & Old Ford (W)WWTW

Grafham Carbons GAC regeneration

Veolia IX regeneration facility, Stoke

Maize digester, Nottingham WWTW

Gas to Grid plant, Minworth WWTW

Thames Gateway desalination plant, London

P removal pilot trials, Packington

Thames Water pilot water treatment plant, Kempton

plus another 9 WTW and 13 WWTW visits



MBR tank, Old Ford



Blue Planet Aquarium



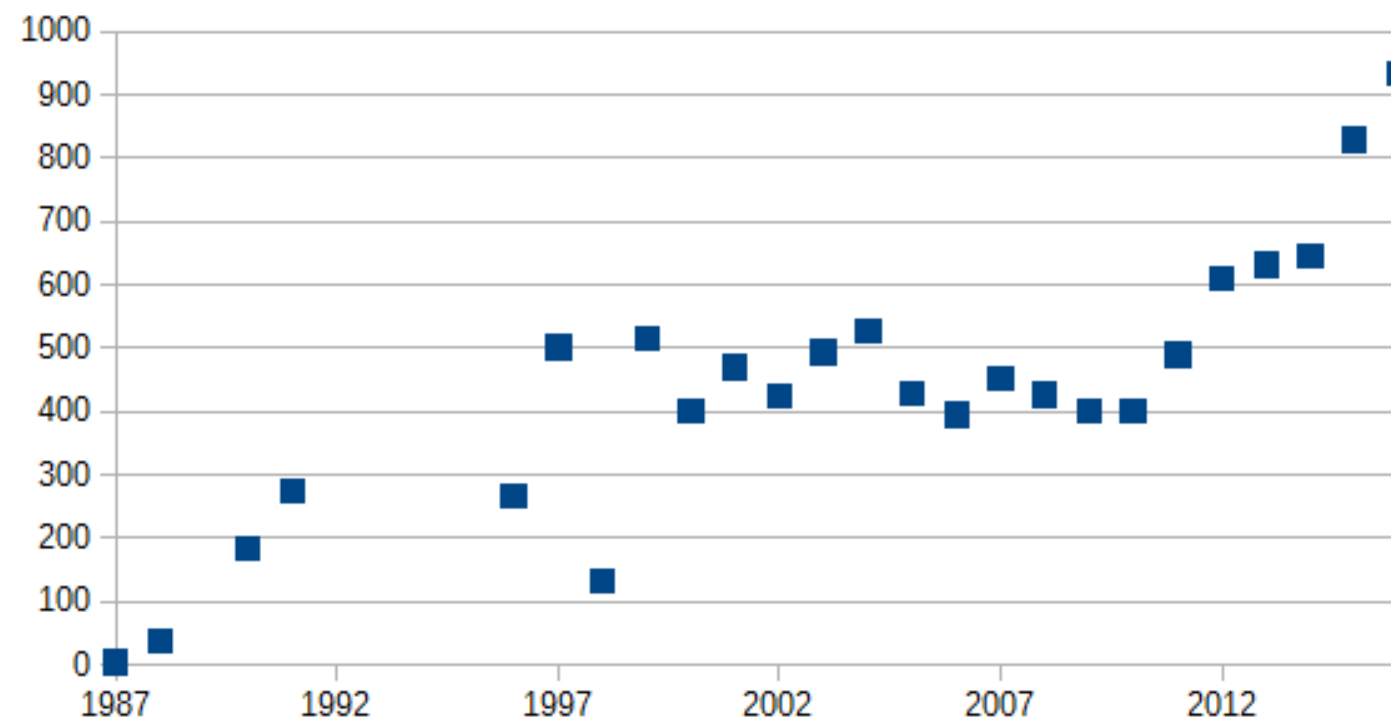
Membership:

1997-2007 membership open to anyone

2011- free membership of an SIG for all IChemE members

2014 – membership only open to IChemE members

Member numbers
at end of year



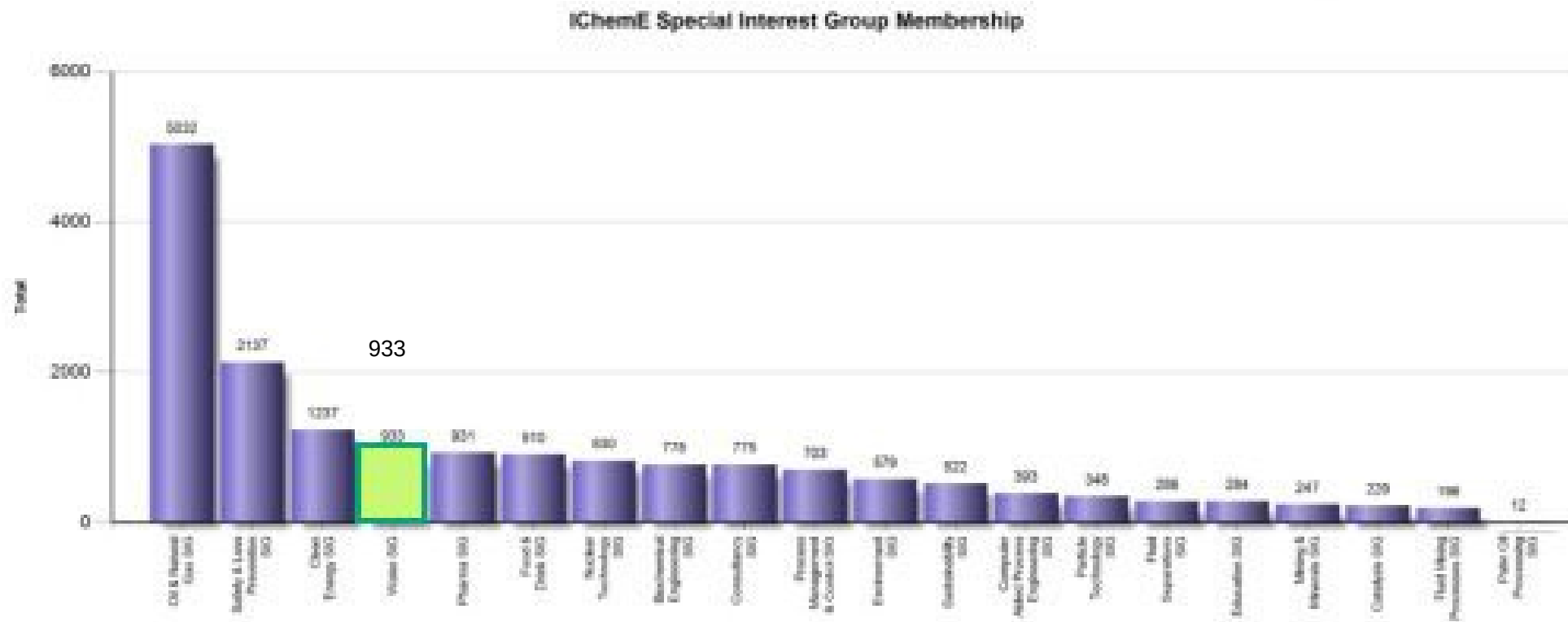


Total IChemE membership c 44,000

Total SIGs membership c 17,000

Membership:

IChemE Special Interest Groups (as at 01/01/17)





For more information including committee, forthcoming events, student bursary application forms:

www.icheme.org

and click through Special Interest Groups - Water