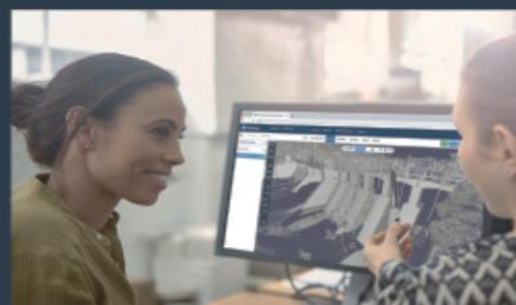




## The Visual Twin Platform

## Reality Capture and digitizing our assets



# Today's speaker



**Ryan Goggin**  
Strategic Account Manager  
[Ryan.goggin@cintoo.com](mailto:Ryan.goggin@cintoo.com)

## Reality Capture - Digitizing The Asset: A New Era In Site Intelligence from engineering to operations and abandonment



Asset Visualisation Platforms



Coordination Across Stakeholders



Design Intent to Operations



Accelerated Engineering



Scan First - A Smart Foundation



The Path Forward



Early Design Validation



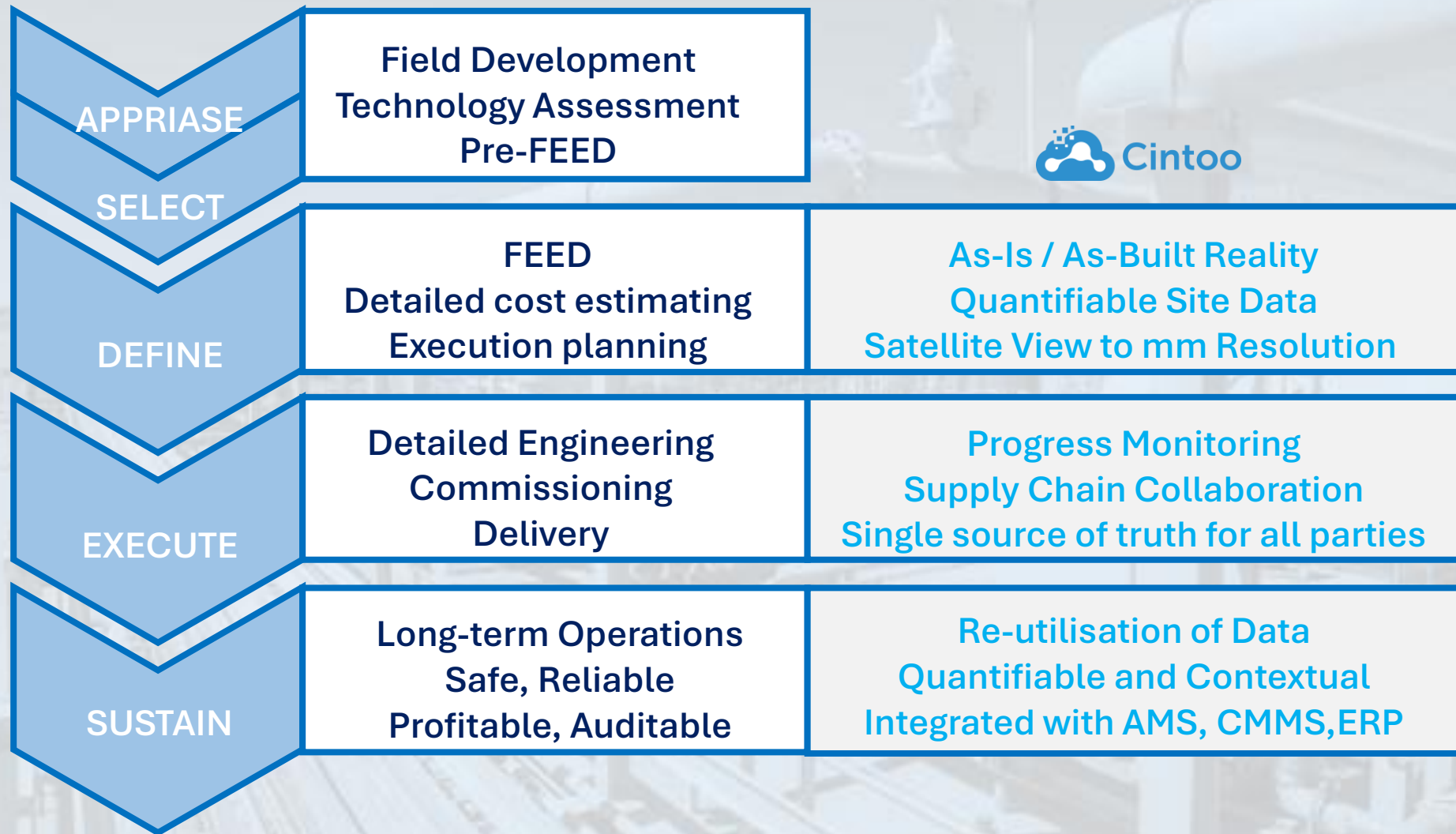
Q & A



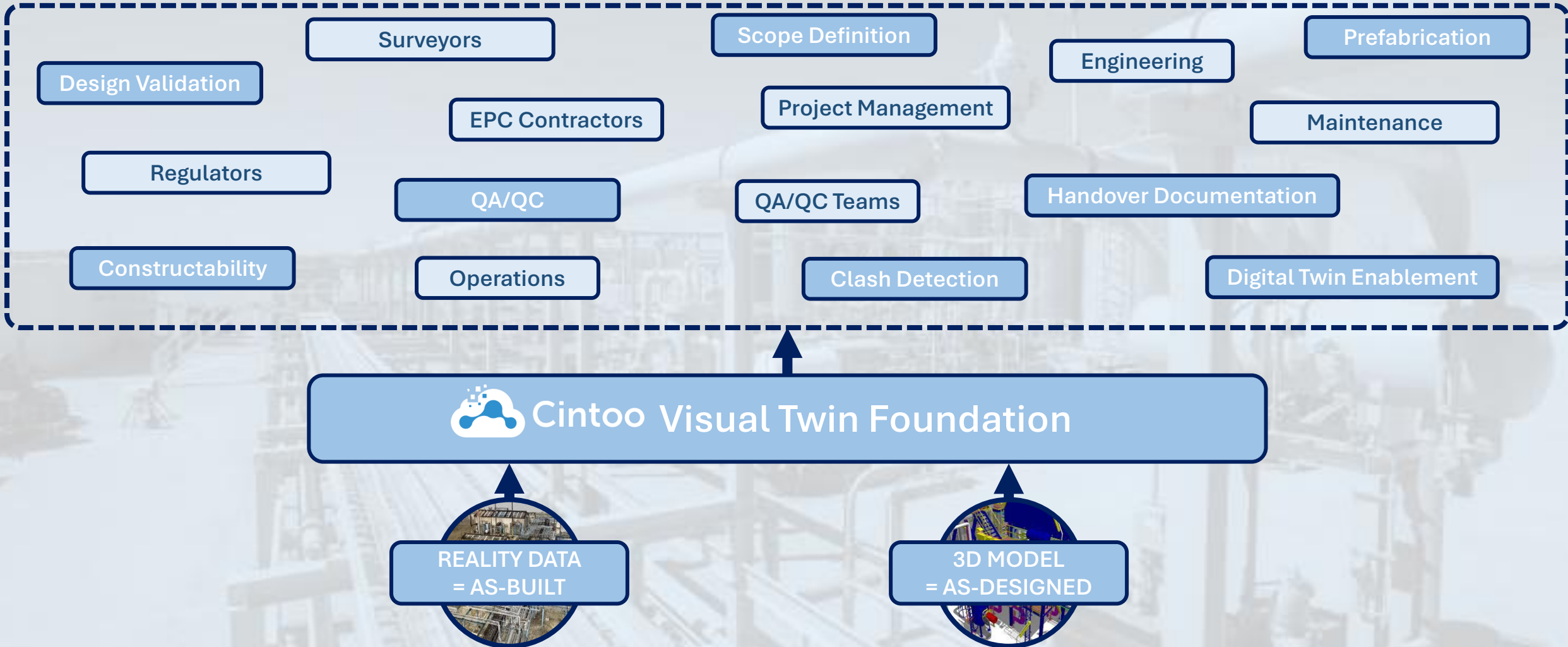
Advances



# Project lifecycle



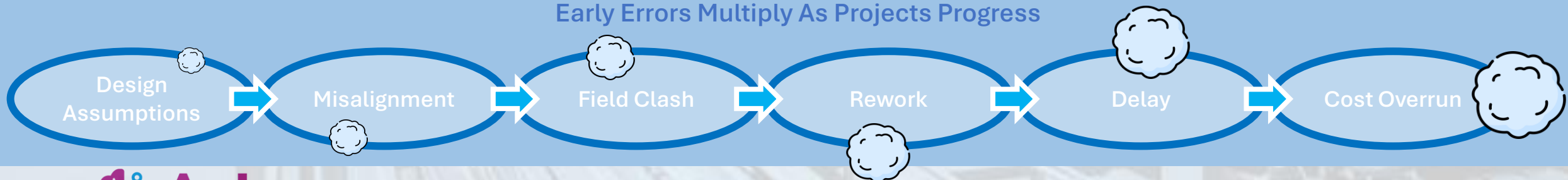
# Scan first – A smart foundation



# Project challenges



Early Errors Multiply As Projects Progress





# Data Overload > Actionable Intelligence

Onshore

Offshore

One Set of Scans -  
Multiple Layers of Value

Brownfield Expansion

Greenfield Development



# Data Overload > Actionable Intelligence

Digitization of assets and  
increasing complexity across the  
tech-stack



Complex and often  
hazardous process  
equipment



Continual focus on process  
safety with evolving  
legislation



Complex transmission and  
storage of materials





# Data Overload > Actionable Intelligence

1 Typical Refinery  
= 500,000+  
Asset Components



1 Typical FPSO  
= 1,000,000 +  
Scanned Objects

The challenge isn't collecting scan data — it's transforming its scale into trusted, actionable intelligence.

# From Scan to Asset Intelligence





# AI Enabled Asset Tagging with

1

Create  
Visual  
Asset Tag

Manual  
Asset Tag

.CSV Imported  
Asset Tag

AI Enabled Asset Identification

Select from 34\* Asset Categories

valve  
(handwheel)



pressure  
gauges



flanges



valve  
(handle)



control  
boxes



electric  
motor



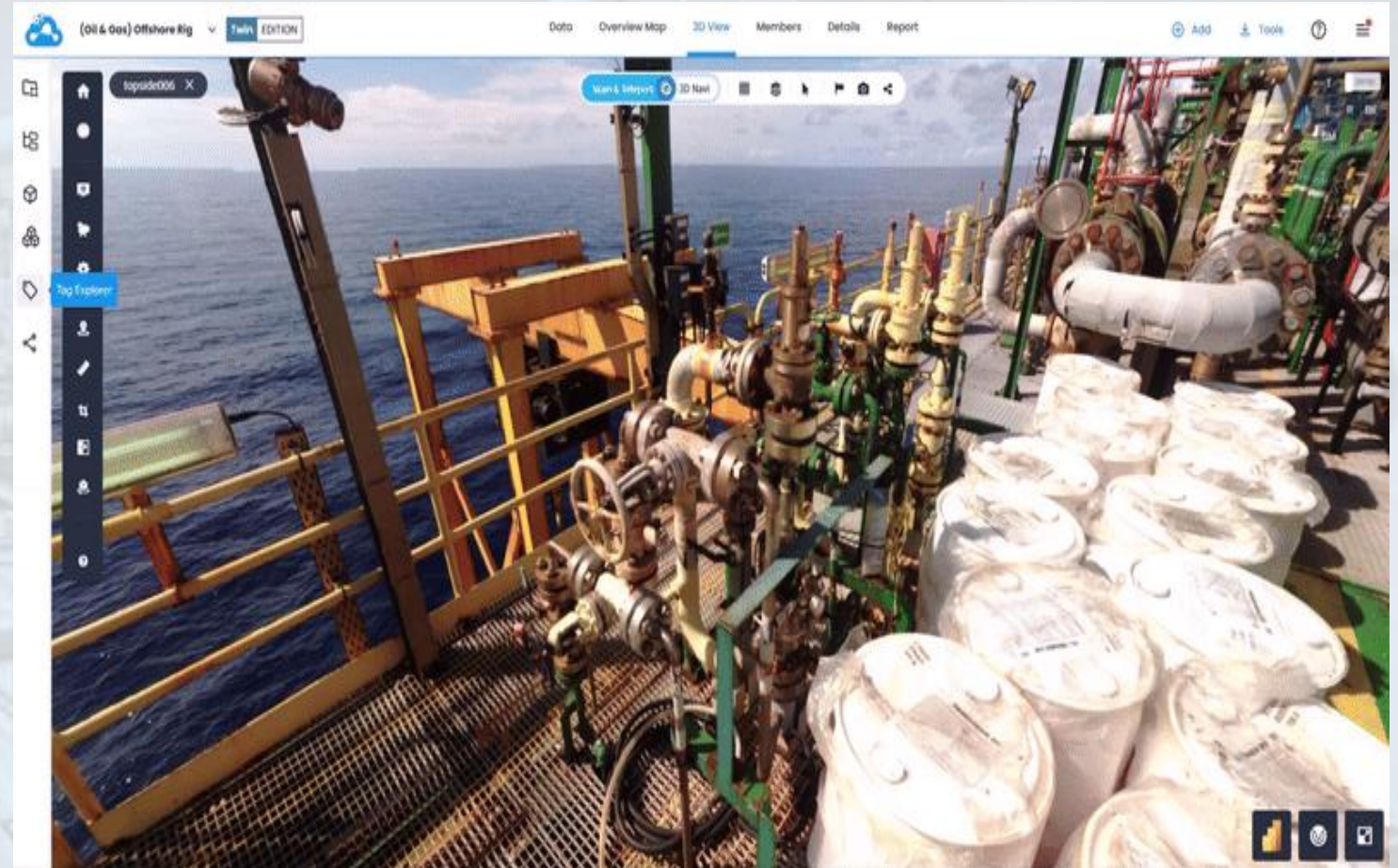
pipes



fire  
equipment



AI Auto-Detection



# AI Enabled Asset Tagging with Cintoo

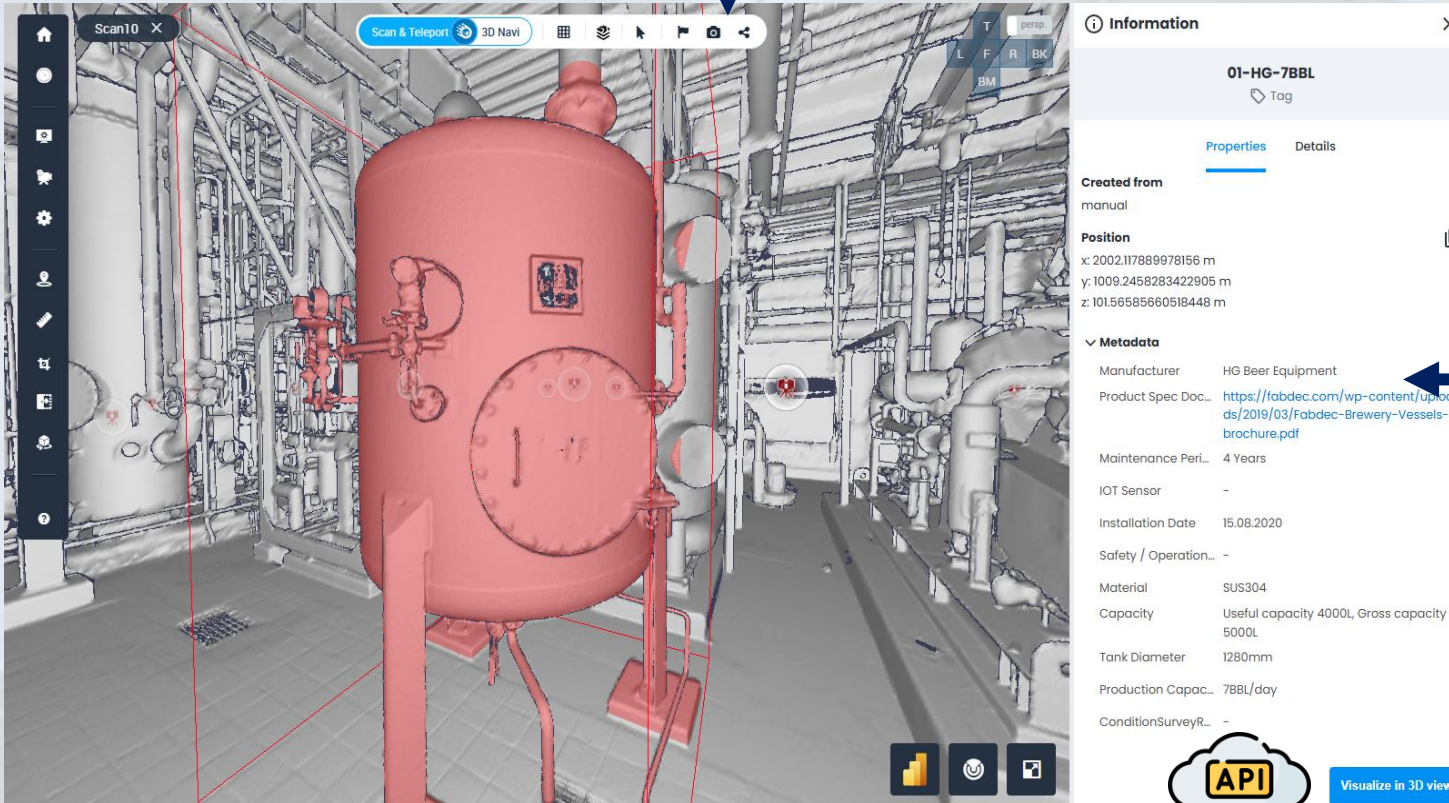
2

Manual Edit Asset Info

Download Tag List > Edit > Import

Connect Unique Tag Via URL with EAM (others) 

Input, Sync  
& Connect  
Asset Info



**Information**

**01-HG-7BBL**  
Tag


**Properties** Details

**Created from**  
manual

**Position**  
x: 2002.117889978156 m  
y: 1009.2458283422905 m  
z: 101.56585660518448 m

**Metadata**

Manufacturer	HG Beer Equipment
Product Spec Doc...	<a href="https://fabdec.com/wp-content/uploads/2019/03/Fabdec-Brewery-Vessels-brochure.pdf">https://fabdec.com/wp-content/uploads/2019/03/Fabdec-Brewery-Vessels-brochure.pdf</a>
Maintenance Peri...	4 Years
IOT Sensor	-
Installation Date	15.08.2020
Safety / Operation...	-
Material	SUS304
Capacity	Useful capacity 4000L, Gross capacity 5000L
Tank Diameter	1280mm
Production Capac...	7BBL/day
ConditionSurveyR...	-

 Visualize in 3D view





# Organisational Confidence



# The path forward



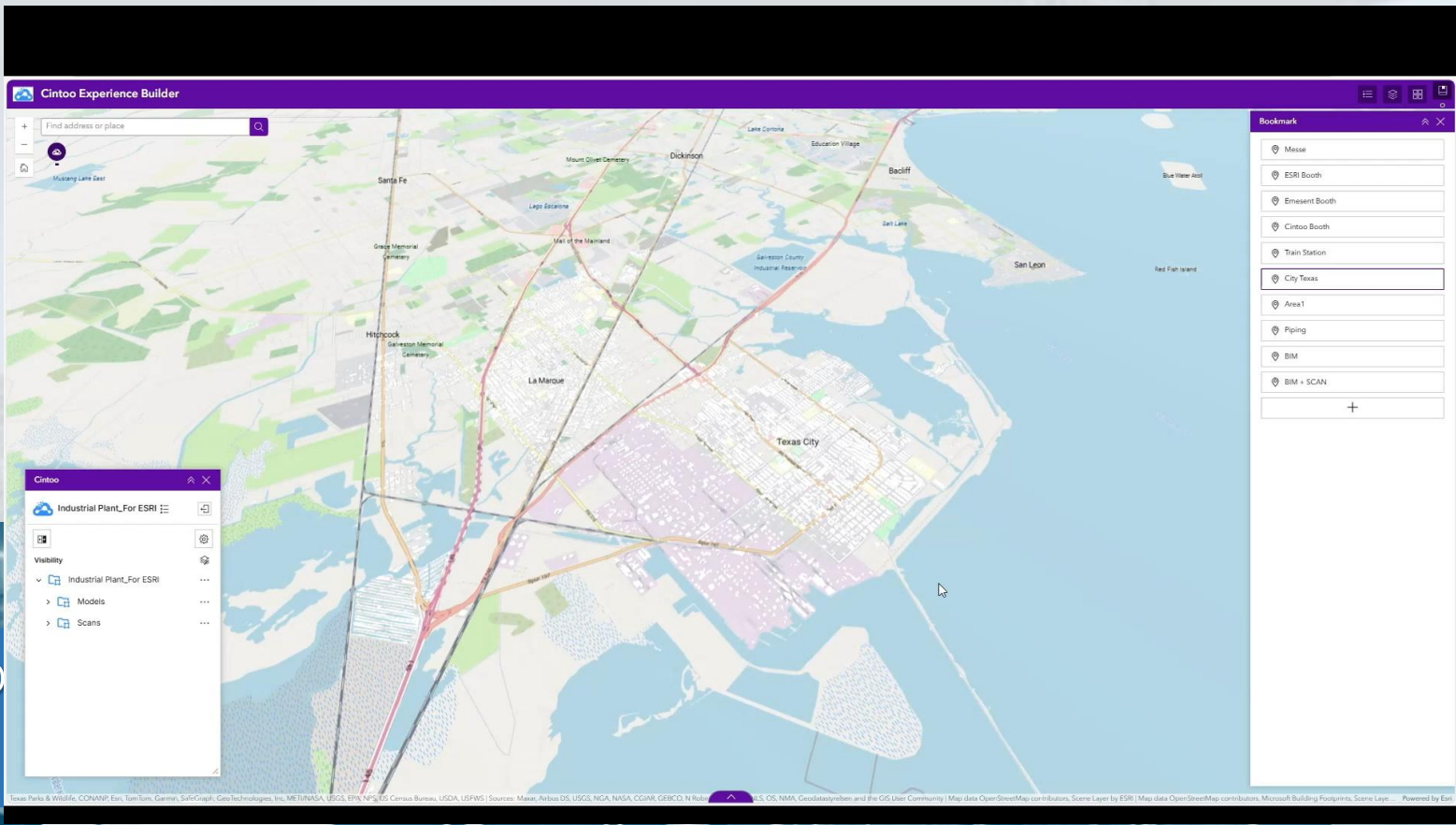
The Backbone of Asset Clarity  
for Smarter, Safer Operations.



# What next?



Thank you



Ryan Goggin  
Account Manager  
ryan.goggin@cintoo.com  


cintoo.com

