

# Winter 2018/19 Newsletter

Cumbria Members Group

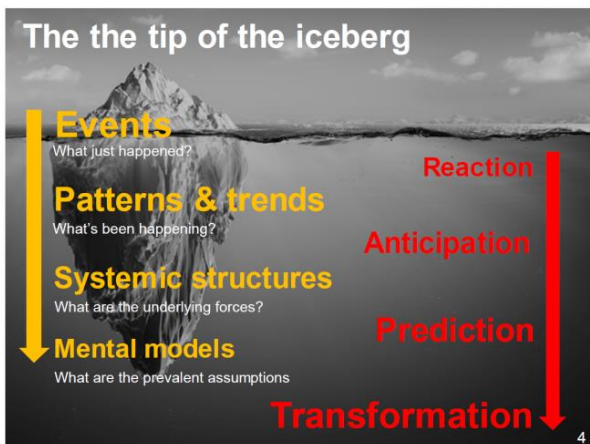


Welcome to the winter 2018/19 edition of the Cumbria Members Group newsletter. Our aim is to support the professional development of Chemical Engineers in our area, for all ages and levels of experience.

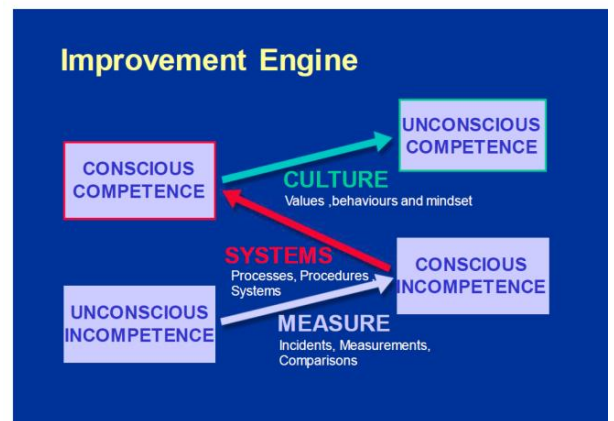
## AGM Review

Our keynote speech this year was from Ken Rivers, IChemE President and COMAH Strategic Forum Chair. Ken's speech touched upon a variety of topics, including leadership, IChemE transformational change and major hazard process safety. A few key points from his speech are below.

- What is the difference between a manager and a leader? A manager guides a team from 'A' to 'B', but a leader defines what 'B' is.
- In order to understand and prevent undesirable events, the patterns and trends, systemic structures and underlying mental models must be understood.



- There are several distinct steps which an organisation or team must go through to improve from an initial state of unconscious incompetence to the final state of unconscious competence.



- We already know the information and good practices required for preventing major accident hazards. The challenge is making good practice into common practice, and applying them with enough rigour and consistency.

We would like to thank everyone who attended the AGM, especially Ken Rivers for his thought provoking speech.

## Cumbria Member Profile – Chris Bone

I have been a member of the IChemE Cumbria Members group for several years. I achieved chartered status in 2011 following joining Sellafield Ltd as a graduate chemical engineer in 2005.

I am currently the Deputy Head of Operations for the Thermal Oxide Reprocessing (Thorp) facility on the Sellafield site. I joined the company having already completed a year in Industry at Sellafield as part of my degree at Loughborough University.

Throughout my career I have predominantly been involved in operations, with some time as an Integration Manager. I started as a frontline operations support team member in the Highly Active Evaporation and Storage facility, this role was really varied, ranging from improving the performance of evaporator throughput, through to organising and supervising steam outages on the plant.

The last few years in Thorp have been the most challenging in my career, as the facility has reached the end of shear operations – I spent a couple of years as the Operations Manager in the Head End part of the facility (where fuel is sheared and dissolved) – a really intense role where the organisation



was driven to deliver operational targets, and interesting for an engineer as it is both a mechanical handling and chemical processing facility.

I have been a mentor for several chemical engineering graduates and have supported graduate recruitment in the past. I enjoy the broad spectrum of experiences at Sellafield and find the IChemE Cumbria Members group a really useful way of meeting like-minded people across a range of industries and stages of their careers.

### Your committee

Toby Cushion – Chair  
Emily Vincent – Secretary  
Phil Murphy – Treasurer  
Dan Pocock – Communications

Jenny Sykes – Events  
Kim Williams – STEM  
Lee Marquis – Mentor coordination

### Upcoming events

Iggesund Site Visit  
*30<sup>th</sup> January, Iggesund Workington*

Get Chartered  
*March, TBC*